

Product datasheet

Anti-KRT81 antibody ab55407

[3 Images](#)

Overview

Product name	Anti-KRT81 antibody
Description	Mouse monoclonal to KRT81
Host species	Mouse
Tested applications	Suitable for: WB, ICC/IF, IHC-P
Species reactivity	Reacts with: Human
Immunogen	Recombinant full length protein, corresponding to amino acids 304-505 of Human KRT81.

[Run BLAST with ExPASy](#) [Run BLAST with NCBI](#)

General notes

Abcam is committed to meeting high standards of ethical manufacturing and as such, we will be discontinuing this product, which has been generated by the ascites method, within the next year. We are sorry for any inconvenience this may cause. If you would like help finding an alternative product, please do not hesitate to contact our scientific support team.

Properties

Form	Liquid
Storage instructions	Shipped at 4°C. Upon delivery aliquot and store at -20°C or -80°C. Avoid repeated freeze / thaw cycles.
Storage buffer	Preservative: None PBS, pH 7.2
Purity	Protein G purified
Clonality	Monoclonal
Isotype	IgG2b
Light chain type	kappa

Applications

Our [Abpromise guarantee](#) covers the use of **ab55407** in the following tested applications.

The application notes include recommended starting dilutions; optimal dilutions/concentrations should be determined by the end user.

Application	Abreviews	Notes
-------------	-----------	-------

WB

ICC/IF

IHC-P

Application notes

WB: Use at a concentration of 1-5 µg/ml.
 IF/ICC: Use at a concentration of 10 µg/ml.
 IHC-P: Use at a concentration of 3 µg/ml.

Not yet tested in other applications.
 Optimal dilutions/concentrations should be determined by the end user.

Target

Tissue specificity

Abundantly expressed in the differentiating cortex of growing (anagen) hair. Expression is restricted to the keratinocytes of the hair cortex and is absent from inner root sheath and medulla. Expressed in malignant lymph node tissue in breast carcinoma tissue.

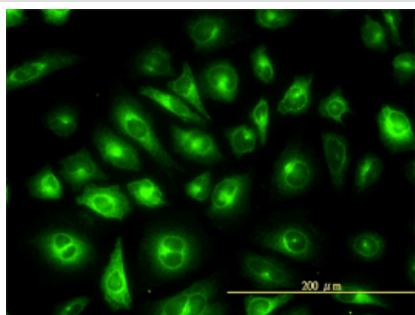
Involvement in disease

Defects in KRT81 are a cause of monilethrix (MLTRX) [MIM:158000]. Monilethrix is an autosomal dominant hair disorder characterized clinically by alopecia and follicular papules. Affected hairs have uniform elliptical nodes of normal thickness and intermittent constrictions, internodes at which the hair easily breaks. Usually only the scalp is involved, but in severe forms, the secondary sexual hair, eyebrows, eyelashes, and nails may also be affected.

Sequence similarities

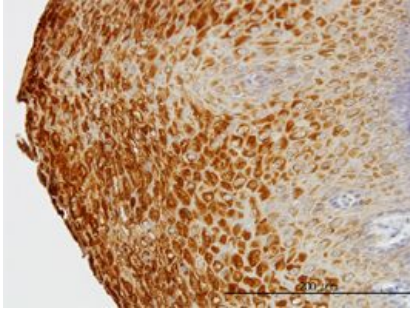
Belongs to the intermediate filament family.

Images



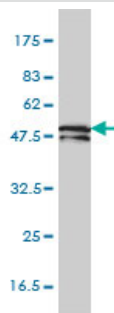
KRT81 antibody (ab55407) used in immunofluorescence at 10ug/ml on HeLa cells.

Immunocytochemistry/ Immunofluorescence - Anti-KRT81 antibody (ab55407)



KRT81 antibody (ab55407) used in immunohistochemistry at 3ug/ml on formalin fixed and paraffin embedded human esophagus.

Immunohistochemistry (Formalin/PFA-fixed paraffin-embedded sections) - Anti-KRT81 antibody (ab55407)



KRT81 antibody (ab55407) at 1ug/lane + HepG2 cell lysate at 25ug/lane.

Western blot - Anti-KRT81 antibody (ab55407)

Please note: All products are "FOR RESEARCH USE ONLY AND ARE NOT INTENDED FOR DIAGNOSTIC OR THERAPEUTIC USE"

Our Abpromise to you: Quality guaranteed and expert technical support

- Replacement or refund for products not performing as stated on the datasheet
- Valid for 12 months from date of delivery
- Response to your inquiry within 24 hours
- We provide support in Chinese, English, French, German, Japanese and Spanish
- Extensive multi-media technical resources to help you
- We investigate all quality concerns to ensure our products perform to the highest standards

If the product does not perform as described on this datasheet, we will offer a refund or replacement. For full details of the Abpromise, please visit <http://www.abcam.com/abpromise> or contact our technical team.

Terms and conditions

- Guarantee only valid for products bought direct from Abcam or one of our authorized distributors