

CD4 Monoclonal Antibody [BLR167J]

Rabbit Recombinant Monoclonal

Purified		RefSeq ID	NP_038516.1
Catalog No.	A700-167	Uniprot ID	P06332
Lot No.	2	GeneID	12504

APPLICATIONS	WB, IP, IHC
SPECIES REACTIVITY	Mouse
AMOUNT	100 µl (50+ tests)
CONCENTRATION	1000 µg/ml
STORAGE/SHELF LIFE	2 – 8°C / 1 year from date of receipt
PHYSICAL STATE	Liquid
BUFFER	Borate Buffered Saline (BBS) pH 8.2 with 0.09% Sodium Azide, BSA-Free
ISOTYPE	IgG
CLONE #	BLR167J
ORIGIN	USA
PRODUCTION PROCEDURES	Recombinant antibody was purified from cell culture supernatant.

Immunogen was a peptide representing a region between residue 407 and the C-terminus (residue 457) of mouse T-cell surface glycoprotein CD4 using the numbering given in entry NP_038516.1 (Gene ID 12504).

APPLICATIONS Centrifuge tube to remove product from lid. Optimal working dilutions should be determined experimentally by the investigator. Prepare working dilution immediately before use.

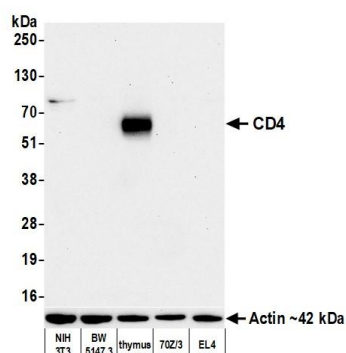
Western Blot	1:1,000
Immunoprecipitation	6 µl/1 mg lysate
Immunohistochemistry	1:100 to 1:500. Epitope retrieval with Tris-EDTA pH9.0 is recommended for FFPE tissue sections.

IHC MOUSE CONTROLS Gut, Lung, Spleen, Thymus

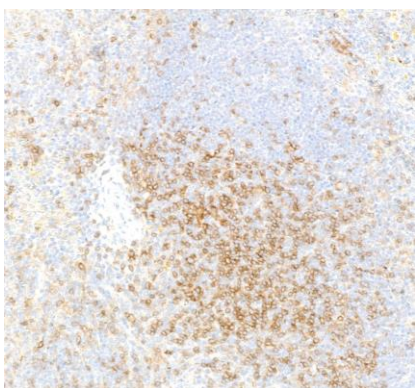
ADDITIONAL INFO <https://www.fortislife.com/p/A700-167>

Use the link above to view SDS, a current list of citations, and other product specific information.

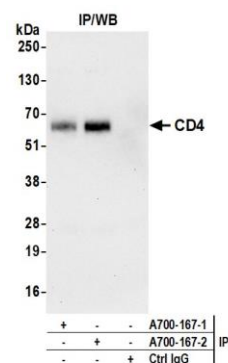
This document certifies that this product has met all of the quality control standards defined by Bethyl Laboratories, Inc.
Michael Spencer, PhD Date: July 7, 2023



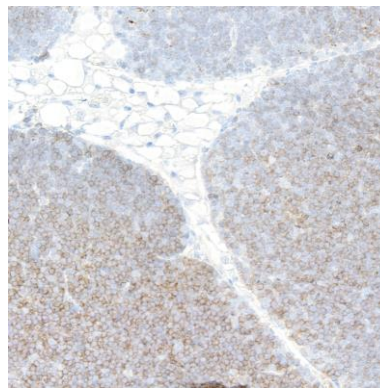
Detection of mouse CD4 by western blot. *Samples:* Whole cell lysate (10 µg) from NIH 3T3, BW5147.3, thymus, 70Z/3, and EL4 cells prepared using NETN lysis buffer. *Antibody:* Rabbit anti-CD4 recombinant monoclonal antibody [BLR167J] (A700-167 lot 2) used at 1:1000. *Secondary:* HRP-conjugated goat anti-rabbit IgG (A120-101P). *Detection:* Chemiluminescence with an exposure time of 75 seconds. Lower Panel: Rabbit anti-Actin recombinant monoclonal antibody [BLR057F] (A700-057).



Detection of mouse CD4 by immunohistochemistry. *Sample:* FFPE section of mouse spleen. *Antibody:* Rabbit anti-CD4 recombinant monoclonal antibody [BLR167J] (A700-167). *Secondary:* HRP-conjugated goat anti-rabbit IgG (A120-501P).



Detection of mouse CD4 by western blot of immunoprecipitates. *Samples:* Whole cell lysate (200 µg per IP reaction; 20% of IP loaded) from mouse thymus. *Antibodies:* Rabbit anti-CD4 recombinant monoclonal antibody [BLR167J] (A700-167 lot 2) used for IP at 6 µl/200 µg lysate. CD4 was also immunoprecipitated by a previous lot of this antibody (A700-167 lot 1). For blotting immunoprecipitated CD4, A700-167 was used at 1:1000. *Detection:* Chemiluminescence with an exposure time of 75 seconds.



Detection of mouse CD4 by immunohistochemistry. *Sample:* FFPE section of mouse thymus. *Antibody:* Rabbit anti-CD4 recombinant monoclonal antibody [BLR167J] (A700-167). *Secondary:* HRP-conjugated goat anti-rabbit IgG (A120-501P).