

CD15 Monoclonal Antibody (HI98), eFluor 615, eBioscience™

Product Details	
Size	100 µg
Species Reactivity	Human
Host/Isotype	Mouse / IgM, kappa
Class	Monoclonal
Type	Antibody
Clone	HI98
Conjugate	eFluor® 615
Form	Liquid
Concentration	0.2 mg/mL
Purification	Affinity chromatography
Storage buffer	PBS, pH 7.2, with 0.1% gelatin
Contains	0.09% sodium azide
Storage Conditions	4° C, store in dark, DO NOT FREEZE!
RRID	AB_10804520

Applications	Tested Dilution	Publications
Western Blot (WB)	-	1 Publication
Immunohistochemistry (IHC)	-	1 Publication
Immunohistochemistry (Paraffin) (IHC (P))	5 µg/mL	-
Immunohistochemistry (Frozen) (IHC (F))	5 µg/mL	-
Immunocytochemistry (ICC/IF)	Assay-Dependent	1 Publication

Product Specific Information

Description: The HI98 monoclonal antibody reacts with human CD15, Lewis X. This 3-fucosyl-N-acetylglucosamine carbohydrate moiety is expressed by granulocytes. Monocytes express this structure at varying degree while lymphocytes are negative.

Applications Reported: This HI98 antibody has been reported for use in immunohistochemical staining of frozen and FFPE tissue sections (IHC-F, IHC-P), and immunocytochemical staining.

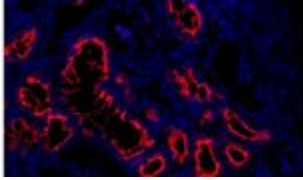
Applications Tested: This HI98 antibody has been tested by immunohistochemical staining of formalin-fixed paraffin embedded human human kidney cortex (IHC-P) using high pH antigen retrieval at less than or equal to 5 µg/mL. It is recommended that the antibody be carefully titrated for optimal performance in the assay of interest. This product has not been validated for flow cytometric analysis.

Filter Recommendation: When using this eFluor® 615 antibody conjugate, we recommend a filter that will capture the 615 emission wavelength (for example, Excitation 560/55, 585LP, Emission 645/75). A standard Alexa Fluor® 594 filter is acceptable.

Excitation: 595 nm; **Emission:** 615 nm.

Filtration: 0.2 µm post-manufacturing filtered.

Product Images For CD15 Monoclonal Antibody (HI98), eFluor 615, eBioscience™



CD15 Antibody (42-0159-82) in IHC (P)

Immunohistochemistry on formalin-fixed paraffin embedded human kidney cortex using 5 µg/mL of Anti-Human CD15 eFluor® 615. Nuclei are counterstained with DAPI.

[View more figures on thermofisher.com](#)

3 References

Western Blot (1)

Oncotarget

Stimulation of medulloblastoma stem cells differentiation by a peptidomimetic targeting neuropilin-1.

"Published figure using CD15 monoclonal antibody (Product # 42-0159-82) in Western Blot"

Authors: Gong C, Valduga J, Chateau A, Richard M, Pellegrini-Moïse N, Barberi-Heyob M, Chastagner P, Boura C

Species

Not Applicable

Dilution

Not Cited

Year

2018

Immunohistochemistry (1)

The Journal of clinical investigation

Schlafen 4-expressing myeloid-derived suppressor cells are induced during murine gastric metaplasia.

"Published figure using CD15 monoclonal antibody (Product # 42-0159-82) in Immunofluorescence"

Authors: Ding L, Hayes MM, Photenhauer A, Eaton KA, Li Q, Ocadiz-Ruiz R, Merchant JL

Species

Not Applicable

Dilution

Not Cited

Year

2016

Immunocytochemistry (1)

The Journal of clinical investigation

Schlafen 4-expressing myeloid-derived suppressor cells are induced during murine gastric metaplasia.

"Published figure using CD15 monoclonal antibody (Product # 42-0159-82) in Immunofluorescence"

Authors: Ding L, Hayes MM, Photenhauer A, Eaton KA, Li Q, Ocadiz-Ruiz R, Merchant JL

Species

Not Applicable

Dilution

Not Cited

Year

2016

For Research Use Only. Not for use in diagnostic procedures. Not for resale without express authorization. Products are warranted to operate or perform substantially in conformance with published Product specifications in effect at the time of sale, as set forth in the Production documentation, specifications and/or accompanying package inserts ("Documentation"). No claim of suitability for use in applications regulated by FDA is made. The warranty provided herein is valid only when used by properly trained individuals. Unless otherwise stated in the Documentation, this warranty is limited to one year from date of shipment when the Product is subjected to normal, proper and intended usage. This warranty does not extend to anyone other than the Buyer. Any model or sample furnished to Buyer is merely illustrative of the general type and quality of goods and does not represent that any Product will conform to such model or sample. NO OTHER WARRANTIES, EXPRESS OR IMPLIED, ARE GRANTED INCLUDING WITHOUT LIMITATION, IMPLIED WARRANTIES OF MERCHANTABILITY, FITNESS FOR ANY PARTICULAR PURPOSE, OR NON INFRINGEMENT. BUYER'S EXCLUSIVE REMEDY FOR NON-CONFORMING PRODUCTS DURING THE WARRANTY PERIOD IS LIMITED TO REPAIR, REPLACEMENT OF OR REFUND FOR THE NON-CONFORMING PRODUCT(S) AT SELLER'S SOLE OPTION. THERE IS NO OBLIGATION TO REPAIR, REPLACE OR REFUND FOR PRODUCTS AS THE RESULT OF (I) ACCIDENT, DISASTER OR EVENT OF FORCE MAJEURE, (II) MISUSE, FAULT OR NEGLIGENCE OF OR BY BUYER, (III) USE OF THE PRODUCTS IN A MANNER FOR WHICH THEY WERE NOT DESIGNED, OR (IV) IMPROPER STORAGE AND HANDLING OF THE PRODUCTS. Unless otherwise expressly stated on the Product or in the documentation accompanying the Product, the Product is intended for research only and is not to be used for any other purpose, including without limitation, unauthorized commercial uses, in vitro diagnostic uses, ex vivo or in vivo therapeutic uses, or any type of consumption by or application to human or animals.